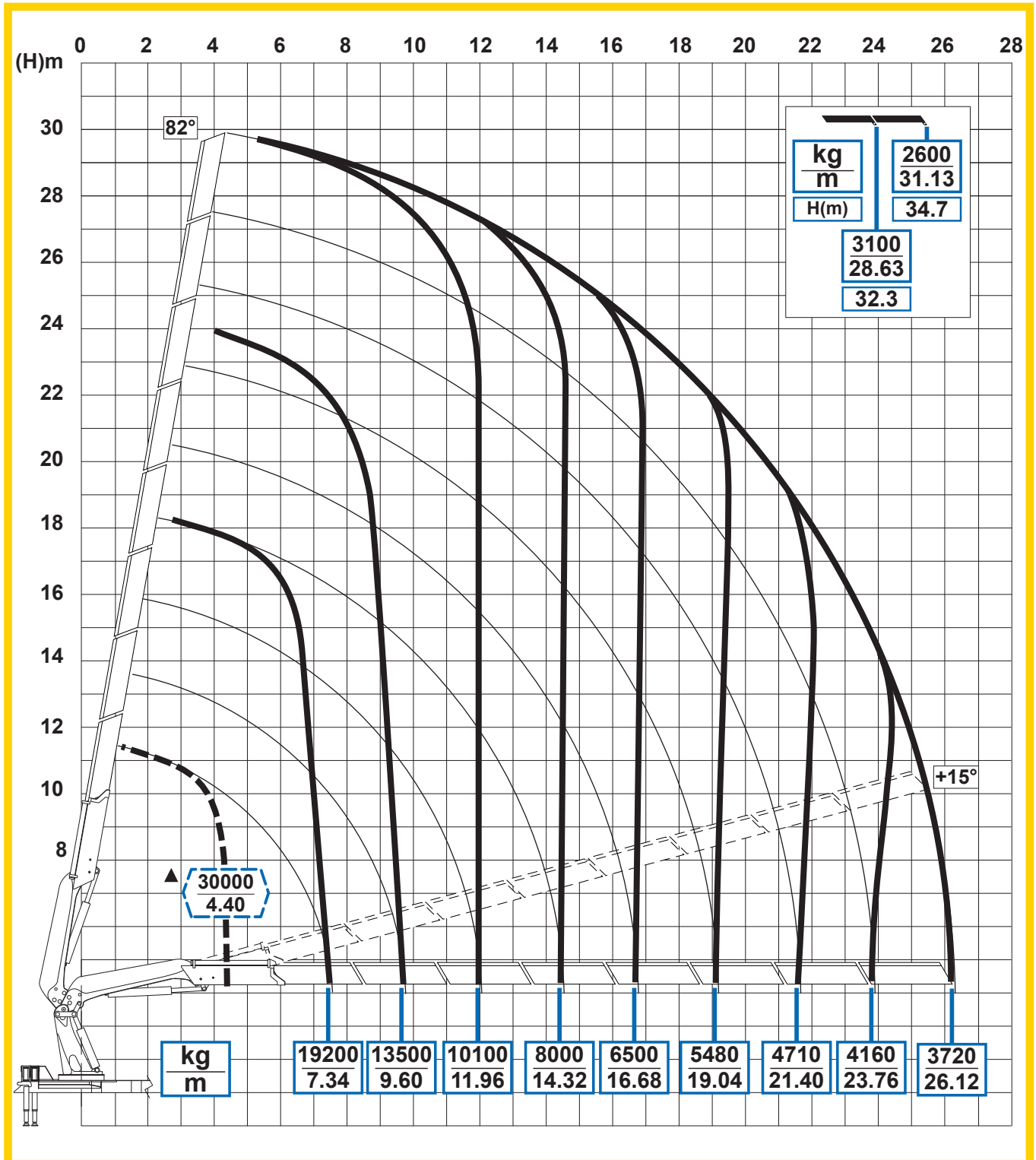




EFFER

2255

8S



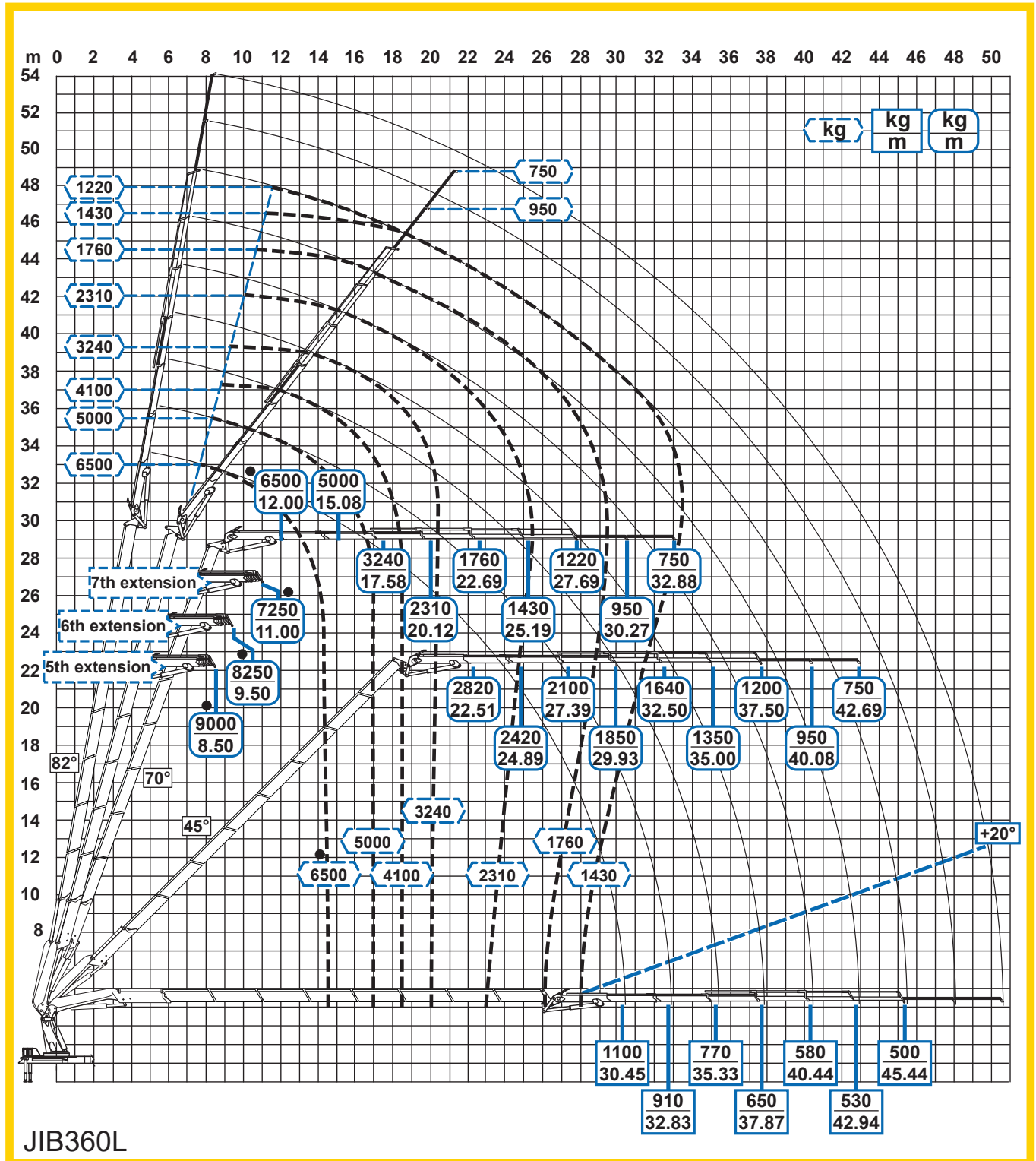
Per note generali e simbologia fare riferimento alla scheda: - For general notes and symbols, pls. refer to the schedule: - Pour notes générales et symboles, veuillez Vs. référer à la fiche: - Mit Bezug auf die allgemeinen Anmerkungen und die Symbolik, beziehen Sie sich bitte auf Blatt: - Para notas generales y simbología referirse a la ficha: - Voor algemene opmerkingen en symbolen, A.U.B Raadpleeg het schema: DP4V001



EFFER

2255

8S + JIB L6S HD



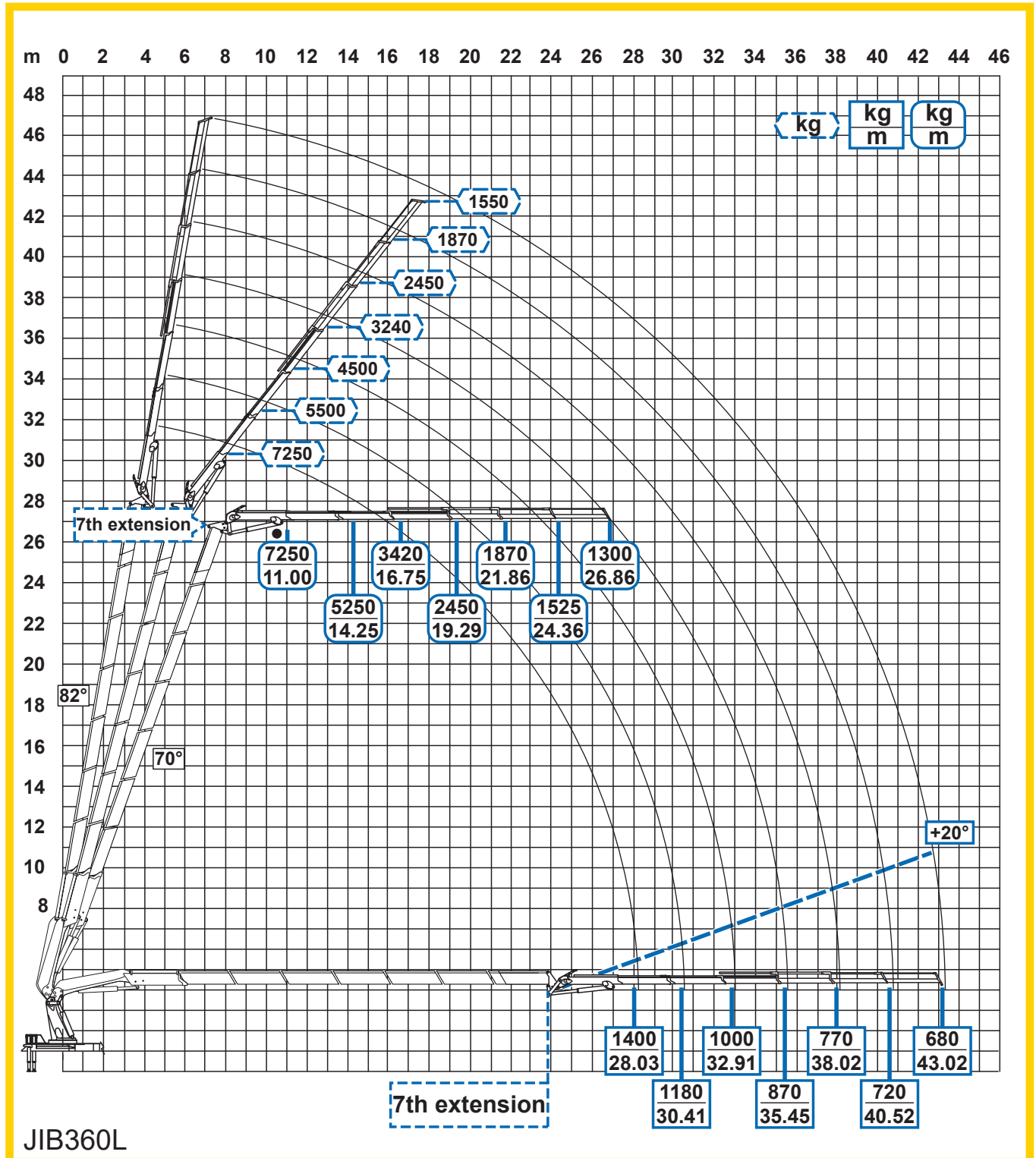
Per note generali e simbologia fare riferimento alla scheda: - For general notes and symbols, pls. refer to the schedule: - Pour notes générales et symboles, veuillez Vs. référer à la fiche: - Mit Bezug auf die allgemeinen Anmerkungen und die Symbolik, beziehen Sie sich bitte auf Blatt: - Para notas generales y simbología referirse a la ficha: - Voor algemene opmerkingen en symbolen, A.U.B Raadpleeg het schema: DP4V001



EFFER

2255

8S + JIB L6S HD



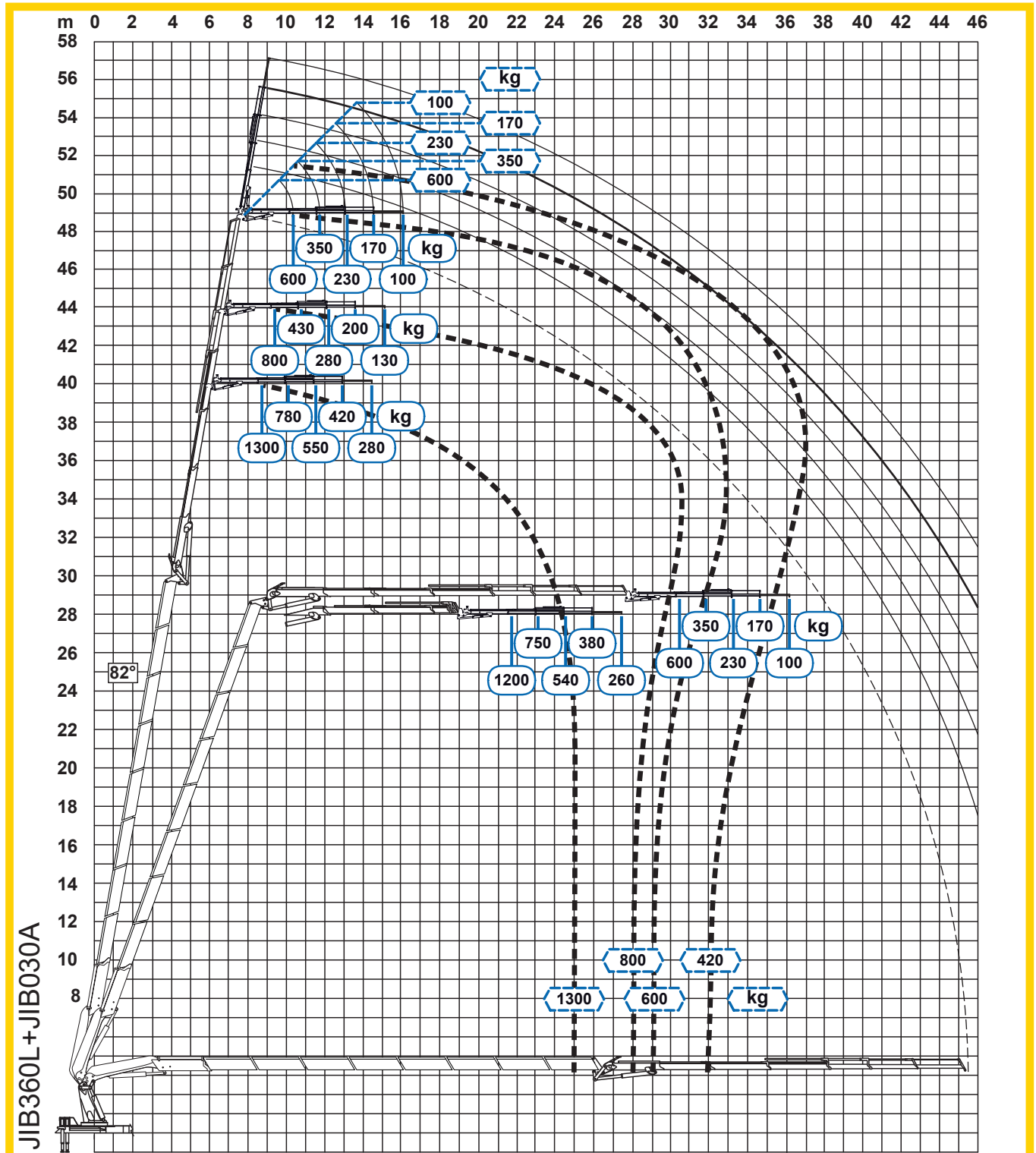
Per note generali e simbologia fare riferimento alla scheda: - For general notes and symbols, pls. refer to the schedule: - Pour notes générales et symboles, veuillez Vs. référer à la fiche: - Mit Bezug auf die allgemeinen Anmerkungen und die Symbolik, beziehen Sie sich bitte auf Blatt: - Para notas generales y simbologia referirse a la ficha: - Voor algemene opmerkingen en symbolen, A.U.B Raadpleeg het schema: DP4V001



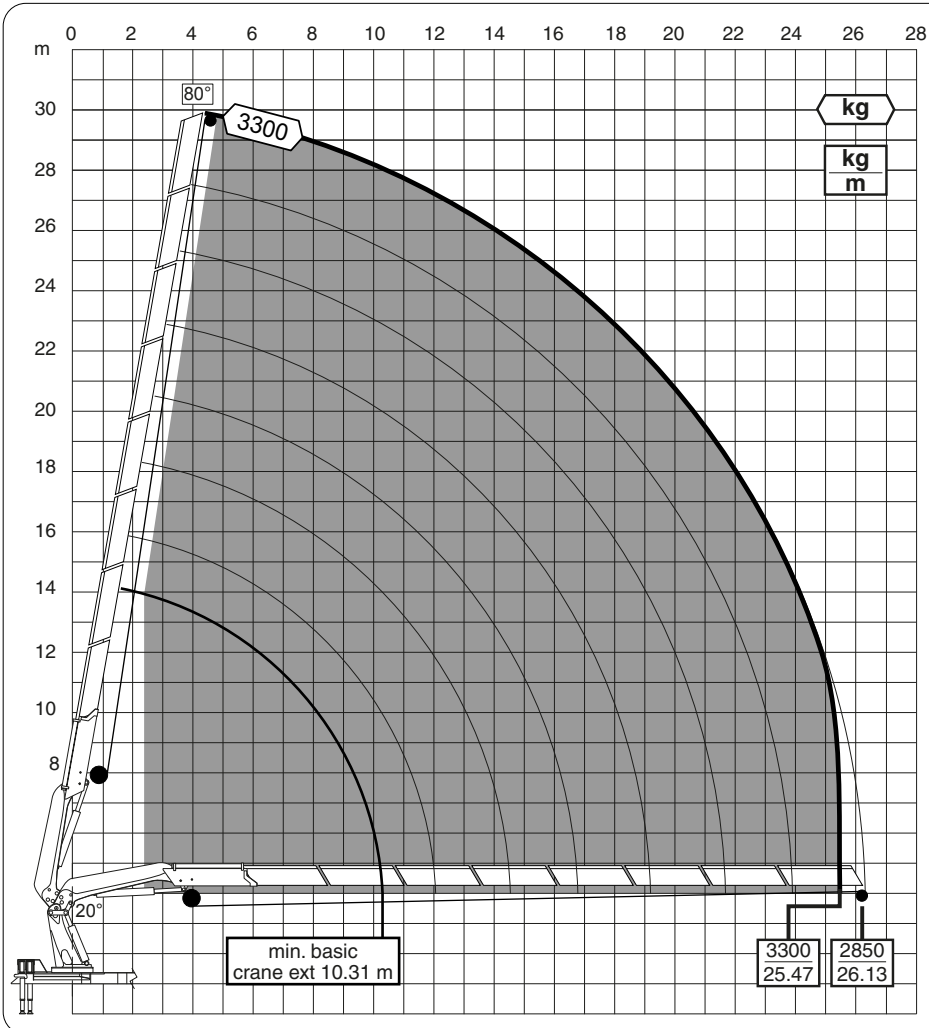
EFFER

2255

8S + JIB L6S HD + JIB 3S



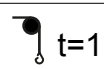
Per note generali e simbologia fare riferimento alla scheda: - For general notes and symbols, pls. refer to the schedule: - Pour notes générales et symboles, veuillez Vs. référer à la fiche: - Mit Bezug auf die allgemeinen Anmerkungen und die Symbolik, beziehen Sie sich bitte auf Blatt: - Para notas generales y simbología referirse a la ficha: - Voor algemene opmerkingen en symbolen, A.U.B Raadpleeg het schema: DP4V001



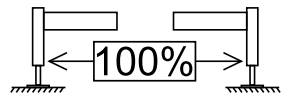
2255/8S

CAPACITIES
WITH WINCH
ONE PULLEY

Winch - Hoist
3600 daN (4th/RL)

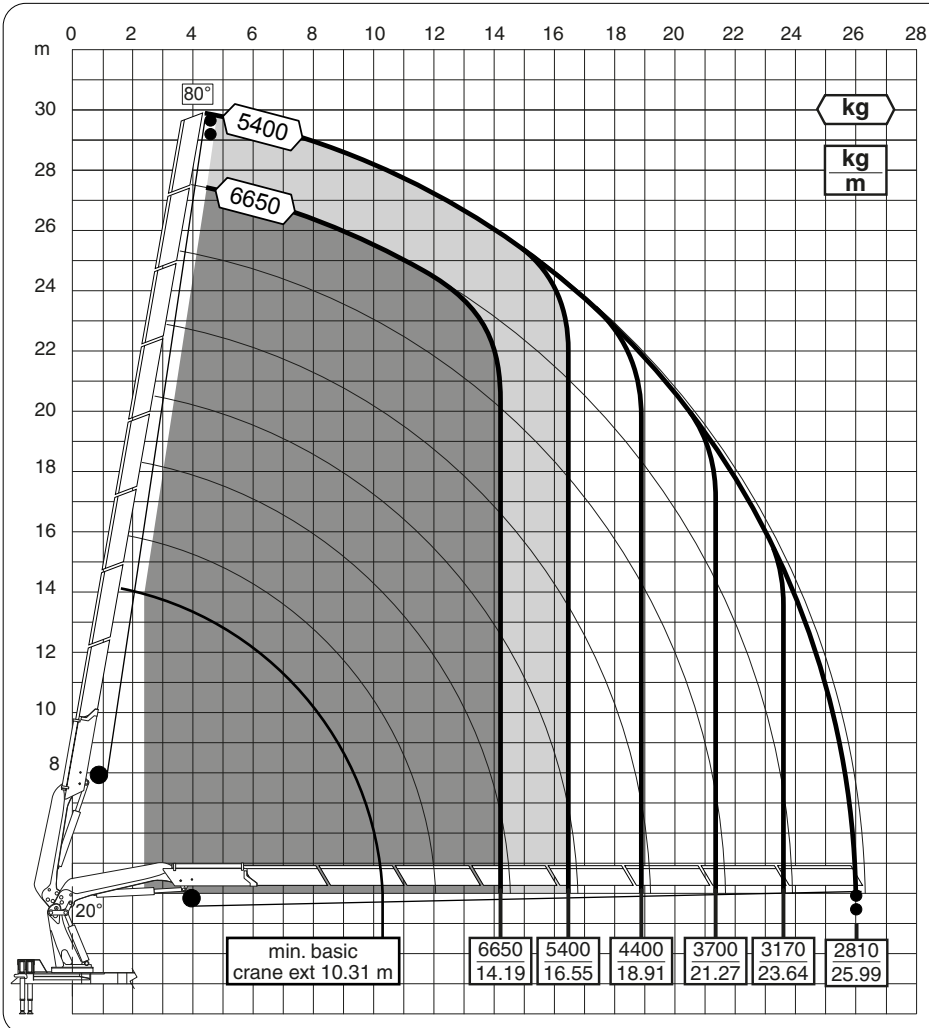


Pmax
3300 kg



PERFORMANCE
100%

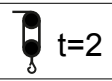
AD4V019_0



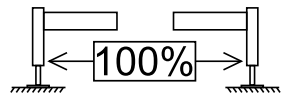
2255/8S

CAPACITIES WITH WINCH TWO PULLEYS

Winch - Hoist
3600 daN (4th/RL)

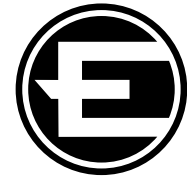
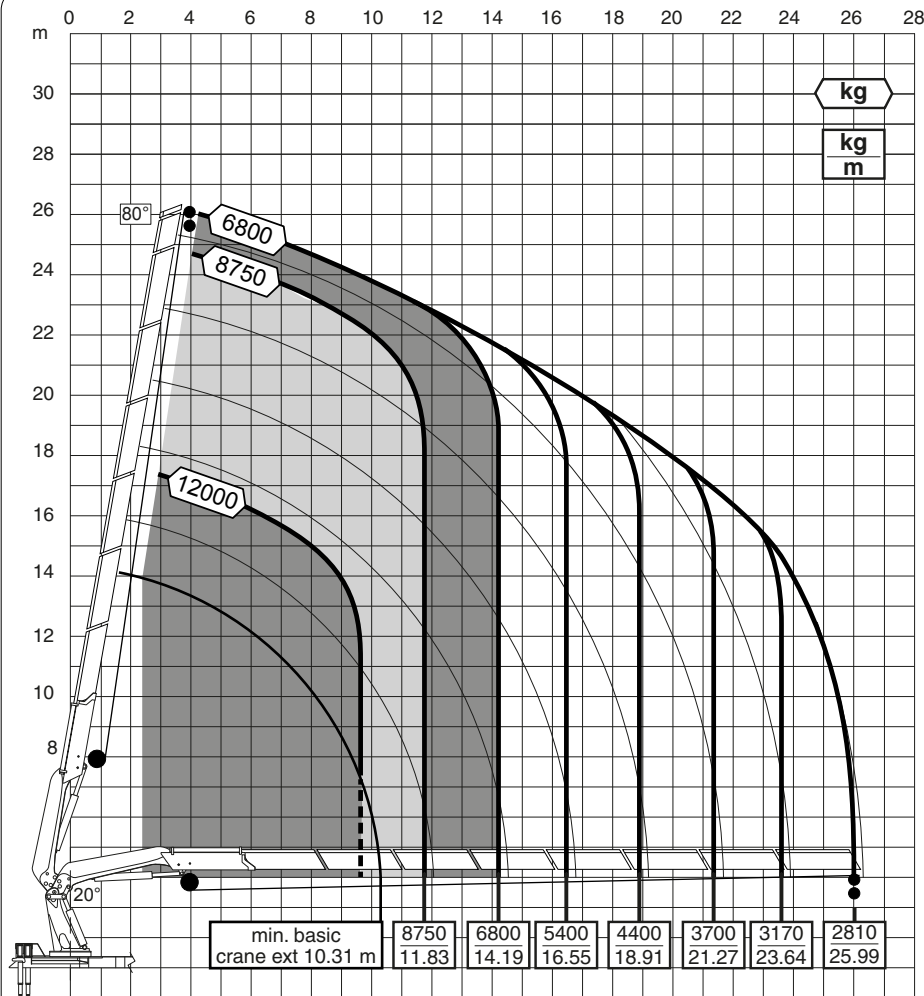


Pmax
6650 kg



PERFORMANCE
100%

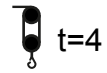
AD4V020_0



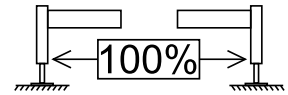
2255/8S

CAPACITIES
WITH WINCH
FOUR PULLEYS

Winch - Hoist
3600 daN (4th/RL)



P_{max}
12000 kg



PERFORMANCE
100%

ATTENZIONE

Condizioni operative per il lavoro in verticale:

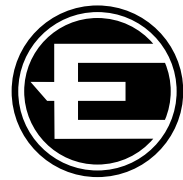
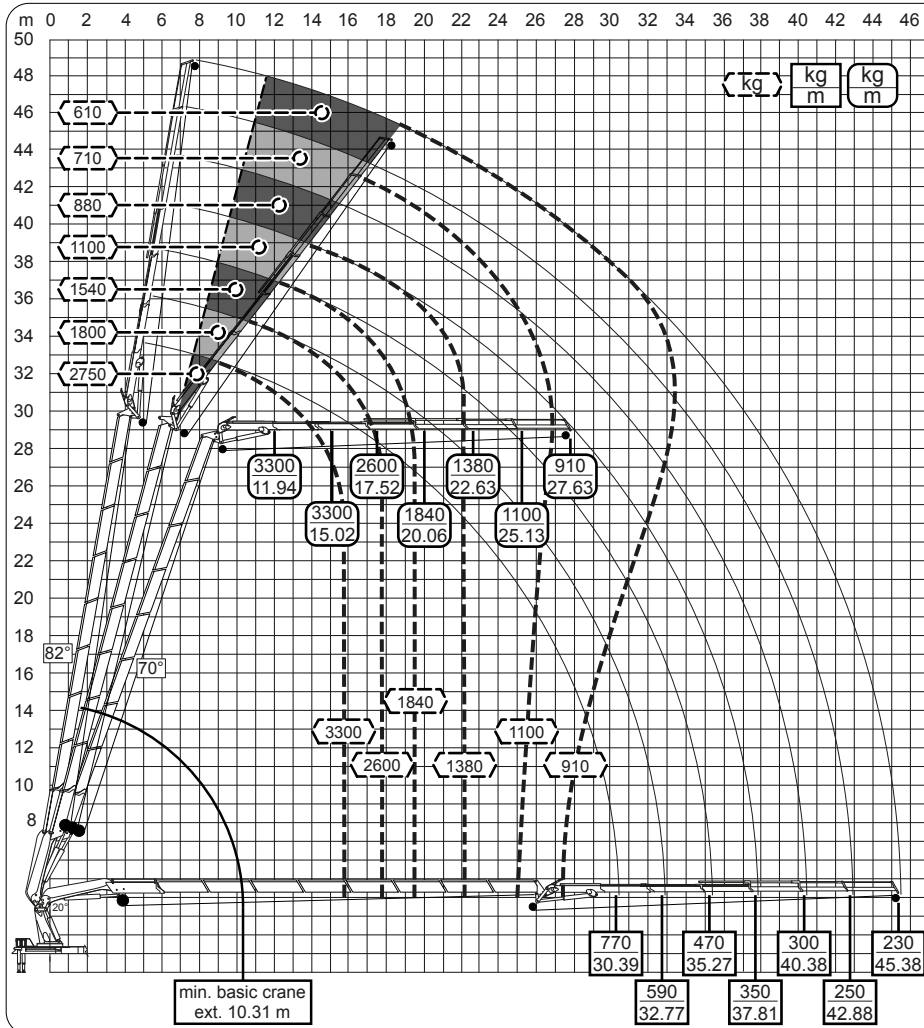
la massima altezza di lavoro ammessa nella configurazione a 4 tiri di ~26 m

CAUTION

Operating conditions for crane work in vertical position:

The maximum work height allowed in the configuration with 4 falls of rope head pulley is ~26 m

AD4V021_0

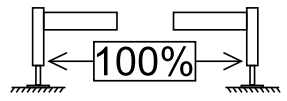


2255/8S
+
JIB L6S HD
CAPACITIES
WITH WINCH
ONE PULLEY

Winch - Hoist
3600 daN (4th/RL)

t=1

Pmax
3300 kg



PERFORMANCE
100%

JIB360L AD4V026_0